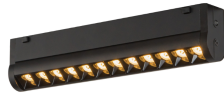


# HOLO SHIFT TRS69309

MULTI-CELL

PROJECT



TRS69309-BK  
Black



TRS69309-BK-4K  
Black



TRS69309-WH  
White



TRS69309-WH-4K  
White

## SPECIFICATION DETAILS

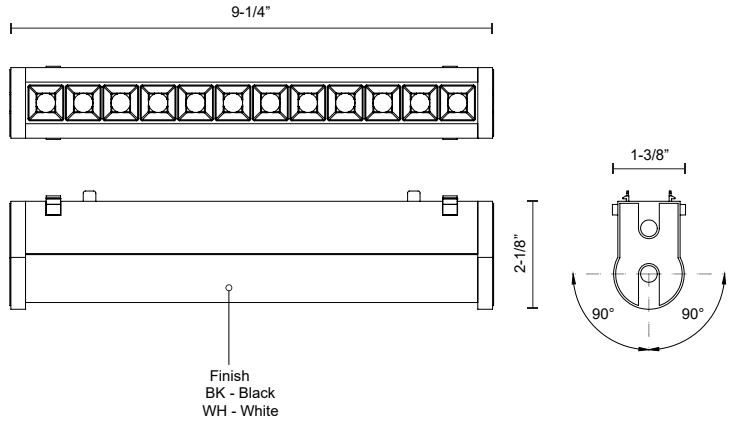
|                               |  |
|-------------------------------|--|
| <b>Fixture Dimensions</b>     | L9-1/4" x W1-3/8" x H2-1/8"  |
| <b>Light Source</b>           | Low Voltage LED  |
| <b>Wattage</b>                | 12W  |
| <b>Total Lumens</b>           | 1020lm   |
| <b>Delivered Lumens</b>       | BK-870lm (@3000K); BK-905lm* (@4000K); WH-915lm* (@3000K); WH-945lm* (@4000K); |
| <b>Voltage</b>                | 48V, with DC Class 2 LED driver (see available canopy/driver options)          |
| <b>Color Temperature</b>      | 3000K; 4000K;  |
| <b>CRI (Ra)</b>               | 90CRI  |
| <b>LED Rated Life</b>         | 50,000 hours   |
| <b>Location</b>               | Dry  |
| <b>CEC Title 24 JA8</b>       | Yes, JA8-2022  |
| <b>Illumination Direction</b> | Directional  |
| <b>Material</b>               | Aluminum + Polymeric Material  |
| <b>Paint Finish</b>           | BK02; WH02   |

\* For custom options, consult factory for details.

\* For warranty information, please visit [www.kuzcolighting.com/warranty](http://www.kuzcolighting.com/warranty)

## DESCRIPTION

Introducing the Holo Shift track head for the Kuzco Trilo track system. Illuminate any space as the multi-cell design effortlessly rotates any direction. Available in two standard sizes, Holo Shift seamlessly fits into your Trilo track system configuration.



# KUZCO

CANADA: 19054 28TH AVENUE - SURREY, BC V3Z 6M3

USA: 3035 E. LONE MOUNTAIN ROAD - LAS VEGAS, NV 89081

[WWW.KUZCOLIGHTING.COM](http://WWW.KUZCOLIGHTING.COM)

© 2024 KUZCO LIGHTING. ALL RIGHTS RESERVED.

## COMMENT

